



**Affordable Cleaning You Can Rely On**

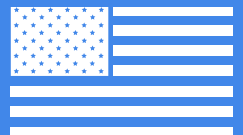
Phone: 262-833-4040 Toll Free: 877-401-0730 [www.timberlineclean.com](http://www.timberlineclean.com)



**Ride On Floor Scrubber**

Rider-M

**Handmade In & Imported From Wisconsin, USA**



# SPECS



## Rider-M

Simplify your cleaning routine with the Rider-M, where size meets strength, and maneuverability meets commercial cleaning.

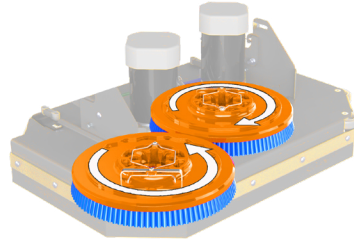
- Up to 176,000 sqft Per Charge
- 40 / 42 Gallons
- 26 - 32 inch decks

### Applications

- Healthcare
- Grocery
- Airports

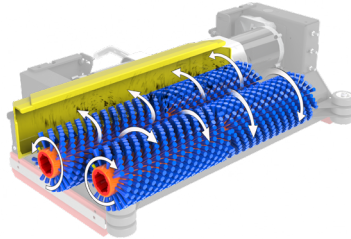
<b>Disk Scrub Path:</b>	28 & 32 in 71 & 81 cm
<b>Cylindrical:</b>	26 & 30 in 66 & 76 cm
<b>Dimensions (LxWxH):</b>	67" x 29" x 60" in* 170 x 74 x 152 cm*
<b>Solution Tank:</b>	40 Gal 151 L
<b>Recovery Tank:</b>	42 Gal 159 L
<b>Demisting Chamber:</b>	1.25 Gal 4 L
<b>Run Time:</b>	Up to 4 Hours*
<b>Theoretical Coverage:</b>	44,000 sqft/hr* 4,087 sqm/hr*
<b>Practical Coverage:</b>	20,500 sqft/hr* 1,904 sqm/hr*

# SCRUB DECKS



## Disk

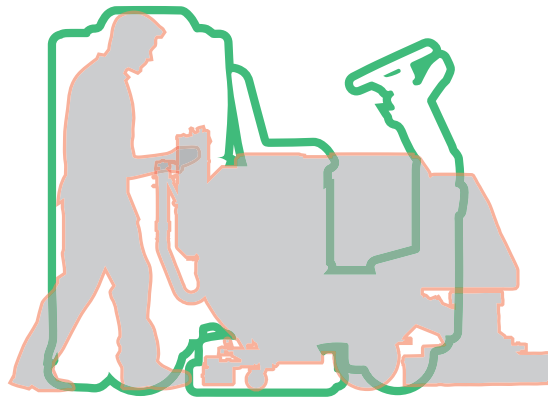
- Brush / Pad Selection
- Lowest Maintenance Cost
- Improved Cleaning on Irregular Floors
- Brushes Individually Driven for Unmatched Performance



## Cylindrical

- Eliminates Dust Mopping
- Scrub & Sweep Simultaneously
- Superior Tile & Grout Cleaning
- Excellent on Rubber Surfaces
- Great for Warehouse Debris

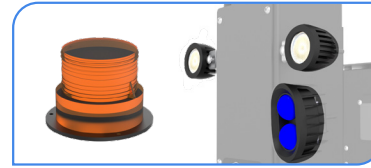
More compact than mid sized walk behinds



# OPTIONS



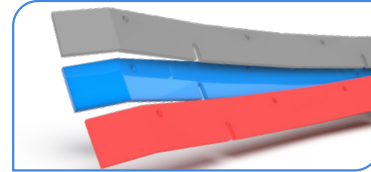
**Vac Wand & Spray Jet**  
Effortlessly pre-soak floors and rinse out recovery tanks without leaving the machine.



**Lights**  
Designed to increase visibility during operation in low-light conditions. Strobe, Blue light, and dual LED headlights.



**WET / AGM Battery Options**  
Choose between a variety of battery options for optimal run and charge times based on the application and needs.

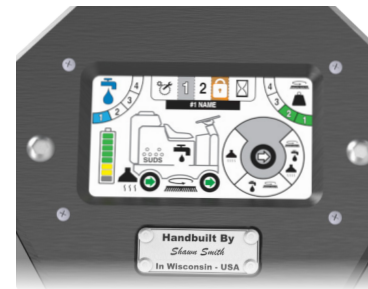


**Squeegee Blade Variations**  
Different applications require different squeegee material to get the job done.

- NanoRade® / Standard
- Urethane / Oil Resistance
- Linatex® / Wear & Tear



- ① Nylon: White / Light - Soft
- ② Tampico: Tan / Soft
- ③\* Polypropylene: Black / Medium - Light
- ④ Light Grit: Grey / Medium
- ⑤ Midi Grit: Blue / Rough
- ⑥\* Tough Grit: Black / Very Rough
- ⑦\* Tufted Pad Driver: Red / Variety Pads



**Optional Touch Screen**

- Three Customizable Applications
- Manager Lockouts
- Four Hour Meters
- Four Auto Sensing Scrub Pressure Settings
- Five Water Settings

Images may include options that are not included standard





**Education**



Amid growing pressure on K-12 and university facilities to uphold cleanliness and safeguard students and faculty, our user-friendly and reliable floor cleaning equipment ensures uninterrupted, daily maintenance.

**Grocery**



Our American-made, durable, and value-priced machines provide retail and grocery clients with initial savings and long-term reliability due to non-proprietary parts, enabling easy repairs by any technician with basic knowledge of battery-powered equipment.

**Healthcare**



In addition to expectations of superior cleaning and drying of the floor, our equipment is designed to be especially quiet and maneuverable. These features allow our equipment to safely operate in congested areas, and without disturbing the public.

Images may include options that are not included standard



# Our Family's American Dream

RPS has been family owned from its inception in 1986, and proudly builds in Wisconsin (USA). The company has grown over the last 35-years with a strong group of executives including the 2nd generation of family owners who started in the shop as youngsters.

Authorized Distributor



## Assembled By Hand

Our American workforce hand-builds each machine with components sourced almost 90% from American suppliers. We routinely pay more for these domestically supplied components required to build a superior product. All design, prototyping, production and testing is done in-house where we can best control quality.



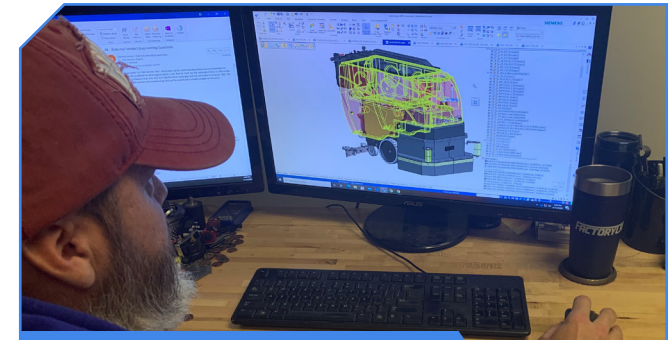
## Steel Fabrication

We produce heavy duty equipment and require a good amount of thick steel in the construction. We use a combination of Stainless 304 (Austenitic 18/8) and mild steel with e-coating + powder paint for corrosion resistance. Steel fabrication is done in-house or from local suppliers with specialty equipment.



## Rotational Molding

Complex shapes that allow for our tank designs are best achieved with in-house equipment. We own multiple dual station rotational molding machines that allow us to produce finished parts from raw plastic. Producing consistently higher quality parts, and respond quickly to sales spikes.



## Product Design

Our team has designed and engineered over 100 unique machines. Each new generation of machines evolve from prior designs to retain the strengths and correct any weakness. From the first pencil sketch we focus on durability, serviceability, performance, productivity, specifications, and value.